

**45** KWIK CAST CONNECT  
**KCCM-MD S 1/4" + 3/8"**  
**GRN-PNK**  
**#2363085**



Info | Shop

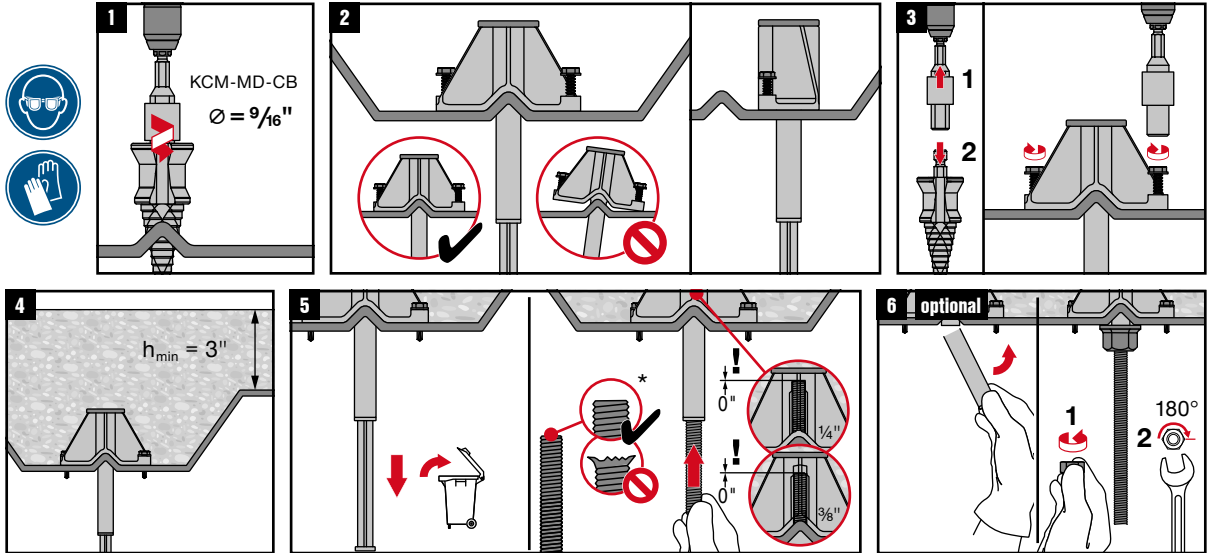
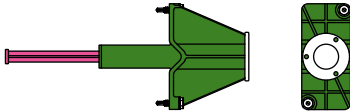


Batch Tracking  
 Information



qr.hilti.com/2363085

Made in Taiwan  
 Hilti = trademark of Hilti Corp., Schaun, LI



UL Listing does not cover the 1/4-inch rod size. For seismic bracing applications cut tube flush to bottom of metal deck. \*End of rod must be free of burrs. When using a high-strength rod (>55 ksi) end must be chamfered.